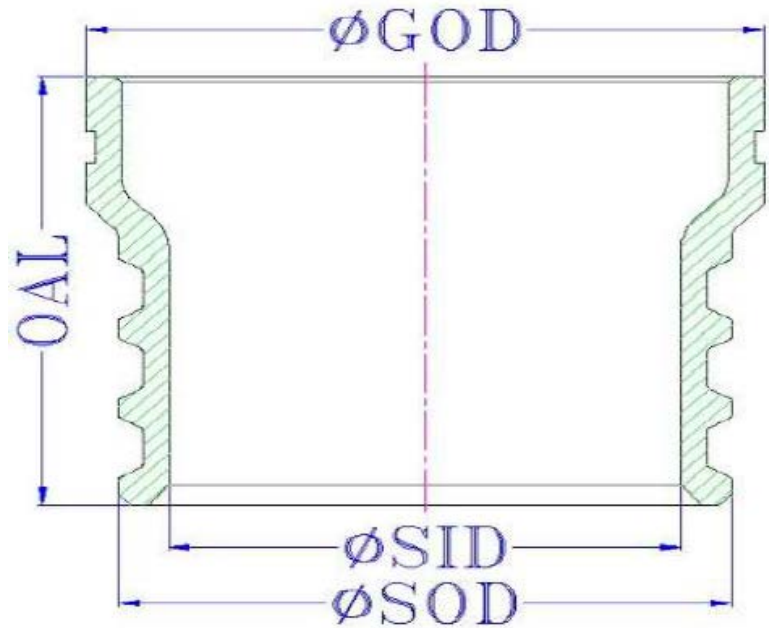


LAYFLAT HOSE COUPLINGS

Layflat Hose Couplings for Produced Water

Coupling material: **Powder Coated Steel Stem**
 Segment Clamp material: aluminum painted in black
 Segment Clamp Bolt material: carbon steel plated



| Size | grooves | Segment | Bolt Torque | Working Pressure | GOD | SID | SOD | OAL | Weight |
|------|---------|---------|-------------|------------------|-------|-------|-------|------|--------|
| | | | FT*LBS | | | | | | |
| 8" | 3 | 3 | 60 | 200PSI | 8.63 | 7.13 | 7.99 | 5.59 | 0.0 |
| 8" | 4 | 3 | 60 | 200PSI | 8.63 | 7.13 | 7.99 | 6.50 | 0.0 |
| 10" | 3 | 3 | 60 | 200PSI | 10.75 | 9.09 | 9.98 | 5.59 | 0.0 |
| 10" | 4 | 3 | 60 | 200PSI | 10.75 | 9.09 | 9.98 | 6.50 | 0.0 |
| 12" | 4 | 4 | 80 | 200PSI | 10.75 | 11.06 | 9.98 | 6.50 | 33.9 |
| 12" | 5 | 4 | 80 | 200PSI | 12.75 | 11.06 | 11.97 | 7.44 | 38.9 |

WARNING: Cancer and Reproductive Harm - www.P65Warnings.ca.gov

ISO 9001:2015 Certified

Click for directions:

JGB® Headquarters
 Liverpool, NY 13088
 (315) 451-2770

Buffalo Branch
 Cheektowaga, NY 14225
 (716) 684-8224

Southeast Hub
 Charlotte, NC 28273
 (704) 588-9920

St. Louis Branch
 St. Louis, MO 63111
 (314) 256-0833

Williston Branch
 Williston, ND 58801
 (701) 774-2195

Houston Branch
 Pasadena, TX 77503
 (281) 930-7777

Download the JGB® Mobile App
 Download on the App Store
 GET IT ON Google Play

Connect with us:

www.jgbhose.com